

DEPARTMENT OF THE ARMY TECHNICAL MANUAL

**Organizational Maintenance Repair Parts
and Special Tools Lists
TEST SET GROUP, INDICATOR, RADAR
OQ-63/APS-94E
6625-193-3428**

**Headquarters, Department of the Army, Washington, D.C.
30 July 1971**

Current as of 1 April 1971

SECTION		Paragraph	Page
	I. INTRODUCTION		
	Scope	1	1-1
	General	2	1-1
	Explanation of columns	3	1-1
	Special information	4	1-2
	How to locate repair parts	5	1-3
	Federal supply codes for manufacturers	6	1-3
	Recommendations for maintenance publications improvements	7	1-3
	II. PRESCRIBED LOAD ALLOWANCE		2-1
	III. REPAIR PARTS LIST		3-1
	IV. SPECIAL TOOLS, TEST AND SUPPORT EQUIPMENT (Not applicable)		
	V. INDEX-FEDERAL STOCK NUMBER AND REFERENCE NUMBER CROSS- REFERENCE TO ITEM SEQUENCE NUMBER		51
	VI. INDEX-REFERENCE DESIGNATION CROSS-REFERENCE TO ITEM SEQUENCE NUMBER		6-1

SECTION I INTRODUCTION

1. Scope

This manual lists repair parts and special tools required for the performance of organizational maintenance of the OQ-63/APS-94D.

2. General

This repair parts and special tools list is divided into the following sections:

a. Prescribed Load Allowance (PLA) - Section II. A composite listing of the repair parts having quantitative allowances for initial stockage at the organizational level.

b. Repair Parts Section III. A list of repair parts authorized for the performance of maintenance at the organizational level.

c. Special Tools, Test and Support Equipment - Section IV. Not applicable.

d. Federal Stock Number and Reference Number Index - Section V. A list of Federal Stock numbers in ascending numerical sequence followed by a list of reference numbers in ascending alphanumeric sequence, cross-referenced to the item sequence number.

e. Reference designation Index - Section VI. A list of reference designators in alphanumeric sequence, cross-referenced to the item sequence number.

3. Explanation of Columns

The following provides an explanation of columns in the tabular lists in sections II and III.

a. Source, Maintenance, and Recoverability Codes (SMR), Column 1) Section III

(1) Source codes, indicate the selection status and source for the listed item. Sources codes are:

code	<i>Explanation</i>
P	Repair parts which are stocked in or supplied from the GSA/DSA, or Army Supply system and authorized for use at indicated maintenance categories.
P2-	Repair parts which are procured and stocked for insurance purposes because the combat or military essentiality of the end item dictates that a minimum quantity be available in the supply system.
P9-	Assigned to items which are NSA design controlled: Unique repair parts, special tools, test, measuring and diagnostic equipment, which are stocked and supplied by the Army COMSEC logistic system, and which are not subject to the provisions of AR 380-41.

<i>Code</i>	<i>Explanation</i>
P10-	Assigned to items which are NSA design controlled: Special tools, test, measuring and diagnostic equipment for COMSEC support, which are accountable under the provisions of AR 380-41, and which are stocked and supplied by the Army COMSEC logistic system.
M	Repair parts which are not procured or stocked, but are to be manufactured in indicated maintenance levels.
A	Assemblies which are not procured or stocked as such, but are made up of two or more units. Such component units carry individual stock numbers and descriptions, are procured and stocked separately and can be assembled to form the required assembly at indicated maintenance categories.
X	Parts and assemblies which are not procured or stocked and the mortality of which normally is below that of the applicable end item or component. The failure of such part or assembly should result in retirement of the end item from the supply system.
X1-	Repair parts which are not procured or stocked. The requirement for such items will be filled by use of the next higher assembly or component.
X2-	Repair parts which are not stocked. The indicated maintenance category requiring such repair parts will attempt to obtain same through cannibalization. Where such repair parts are not obtainable through cannibalization, requirements will be requisitioned, with accompanying justification, through normal supply channels.
C-	Repair parts authorized for local procurement. Where such repair parts are not obtainable from local procurement, requirements will be requisitioned through normal supply channels accompanied by a supporting statement of nonavailability from local procurement.
G-	Major assemblies that are procured with PEMA funds for initial issue only as exchange assemblies at DSU and GSU level. These assemblies will not be stocked above DS or GS level or returned to depot supply level.

(2) Maintenance code indicates the lowest category of maintenance authorized to install the listed item. The maintenance level code is: -

Code	Explanation
------	-------------

0- Original maintenance

(3) Recoverability codes indicate whether un-serviceable items should be returned for recovery or salvage. Items not coded are expendable. Recoverability codes are: -

cod?	Explanation
------	-------------

R- Repair parts and assemblies which are economically repairable at DSU and GSU activities and are normally furnished by supply on an exchange as

S - Repair parts and assemblies which are economically repairable at DSU and GSU activities and which normally are furnished by supply on an exchange basis. When items are determined by a GSU to be uneconomically repairable they will be evacuated to a depot for evaluation and analysis before final disposition.

T - High-dollar value recoverable repair parts which are subject to special handling and are issued on an exchange basis. Such repair parts normally are repaired or overhauled at depot maintenance activities.

U - Repair parts specifically selected for salvage by reclamation units because of precious metal content, critical materials, or high dollar value reusable casings, or castings.

b. Federal Stock Number, Column 1, Section II and Column 2, Section III. This column indicates the Federal stock number assigned to the item and will be used for requisitioning purposes.

c. Description, Column 2, Section II and Column 3, Section III. Indicates the Federal item name and any additional description of the item required. A part number or other reference number is followed by the applicable five-digit Federal supply code for manufacturers in parentheses. On subsequent appearances of an item, the part number and Federal supply code is replaced by **SAME AS** (applicable sequence number) .”

d. Unit of Measure (U/M), Column 4, Section III. A two character alphabetic abbreviation indicating the amount or quantity of the item upon which the allowances are based, e.g., ft., ea., pr., etc.

e. Quantity Incorporated in Unit, Column 5, Section III. This column indicates the quantity of

the item used in the OQ-63/APS-94D. A “V” appearing in this column in lieu of a quantity indicates that a definite quantity cannot be indicated (e.g., shims, spacers, etc.).

f. 15-Day Organizational Maintenance Allowance, Column 3 Of Section II and Column 6 of Section III.

(1) The allowance columns are divided into four subcolumns. Indicated in each subcolumn opposite the first appearance of each item is the total quantity of items authorized for the number of equipments supported. Subsequent appearances of the same item will have the letters “REF” in the allowance columns. Items authorized for use as required but not for initial stockage are identified with an asterisk in the allowance column.

(2) The quantitative allowances for organizational level of maintenance represents one initial prescribed load for a 15-day period for the number of equipments supported. Units and organizations authorized additional prescribed loads -will multiply the number of prescribed loads authorized by the quantity of repair parts reflected in the density column applicable to the number of items supported to obtain the total quantity of repair parts authorized.

(3) Organizational units providing maintenance for more than 100 of these equipments shall determine the total quantity of parts required by converting the equipment to a decimal factor by placing a decimal point before the next to last digit of the number to indicate hundredths, and multiplying the decimal factor by the parts quantity authorized in the 51-100 allowance column. **Example**, authorized allowance for 51-100 equipments is 40; for 150 equipments multiply 40 by 1.50 or 60 parts required.

g. Illustration, Column 7, Section III. This column is divided as follows:

(1) **Figure number, column 7a, section III.** Indicates the figure number in which the item is shown.

(2) **Item number, column 7b, section III.** Indicates the call out number used to reference the item in the illustration.

4. Special information

a. The following publications pertain to OQ-63/APS-94D and its components:

TM 11-6625-1333-12

Organizational Maintenance Manual

TM 11-6625-1833-40

General Support Maintenance Manual

b. Repair parts mortality is computed from failure rates derived from experience factors with the individual parts in a variety of equipments.

Variations in the specific application and periods of use of electronic equipment, the fragility of electronic piece parts, plus intangible material and quality factors intrinsic to the manufacture of electronic parts, do not permit mortality to be based on hours of end item use. However, long periods of continuous use under adverse conditions are likely to increase repair parts mortality.

c. Split coding such as AF, MD, PH, etc., found in the source column indicate parts which require manufacture, assembly, or stockage at a category higher than that authorized to install the item.

For example, an item coded MD-O denotes the source of the item to be manufactured (M) at the depot level (D) and authorized for installation at the organizational level (O) .

5. How to Locate Repair Parts

a. When Federal stock number or reference number is unknown-

(1) First find the illustration covering the assembly group to which the repair part belongs.

(2) Second, identify the repair part on the illustration and note the complete reference designation used to call out the item.

(3) Third, using the reference designation cross-reference to item sequence number index

(sec. IV), find the reference designation and note the item sequence number.

(4) Fourth, locate the item sequence number in the repair parts list (sec. III).

b. When Federal stock number or reference number is known-

(1) First, using the federal stock number and reference number index (sec. V) find the pertinent number and note the item sequence number.

(2) Second, locate the item sequence number in the repair parts list (sec. III).

6. Federal Supply Code

Manufacturers

80058....Joint Electronic Type Designation System
96906....Military Standards Formulated by Standardization Div., Directorate of Logistic Services, DSA

7. Recommendations for Maintenance

Publications Improvements

Reporting of errors, omissions, and recommendations for improving this publication by the individual user is encouraged. Reports should be submitted on DA Form 2028 (Recommended Changes to Publications) and forwarded direct to Commanding General, U.S. Army Electronics Command, ATTN : AMSEL-ME-WMP-AD, Fort Monmouth, N.J. 07703.

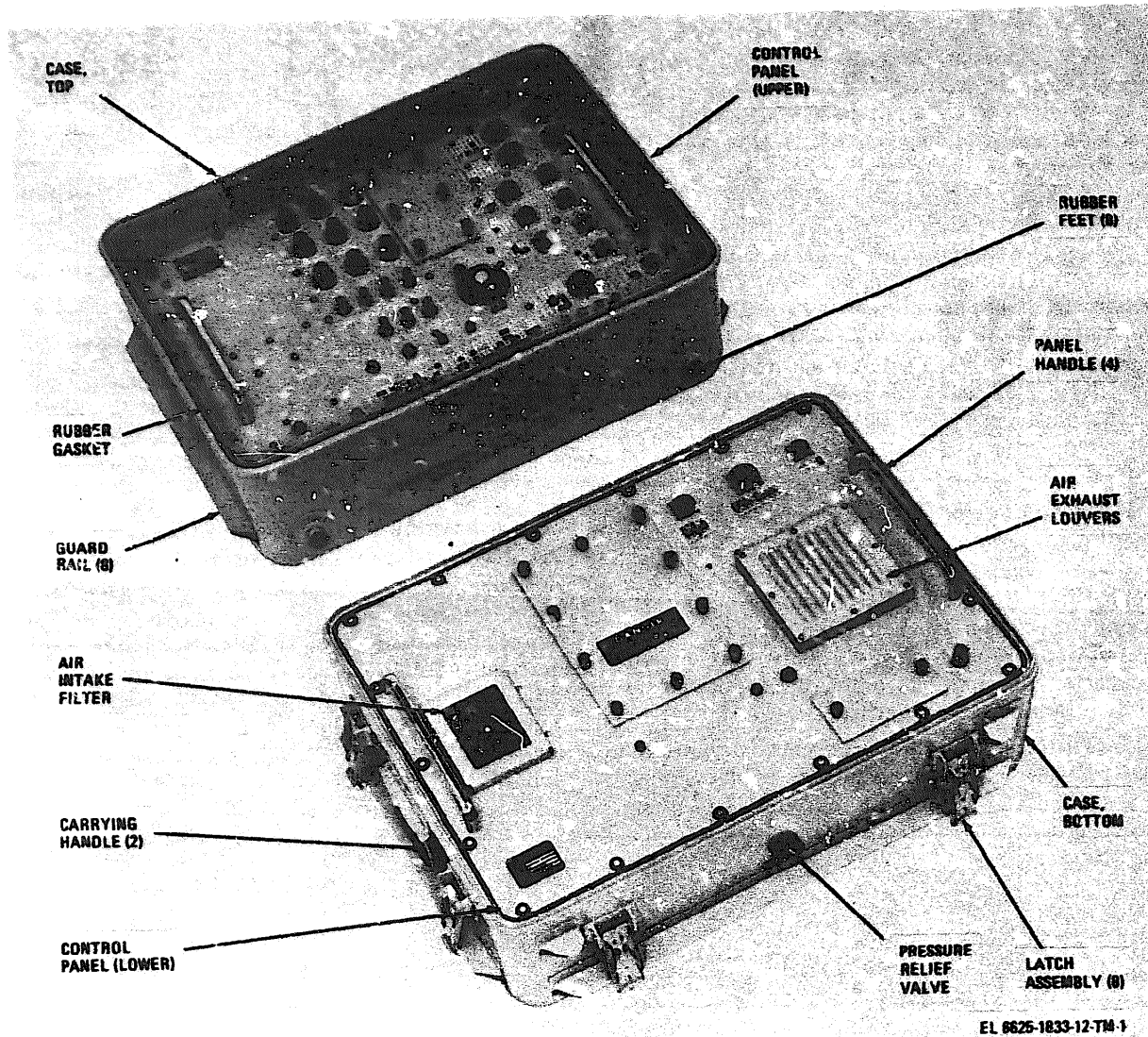


Figure 1-1. Test Set Subassembly MX-8638/APS-94D.

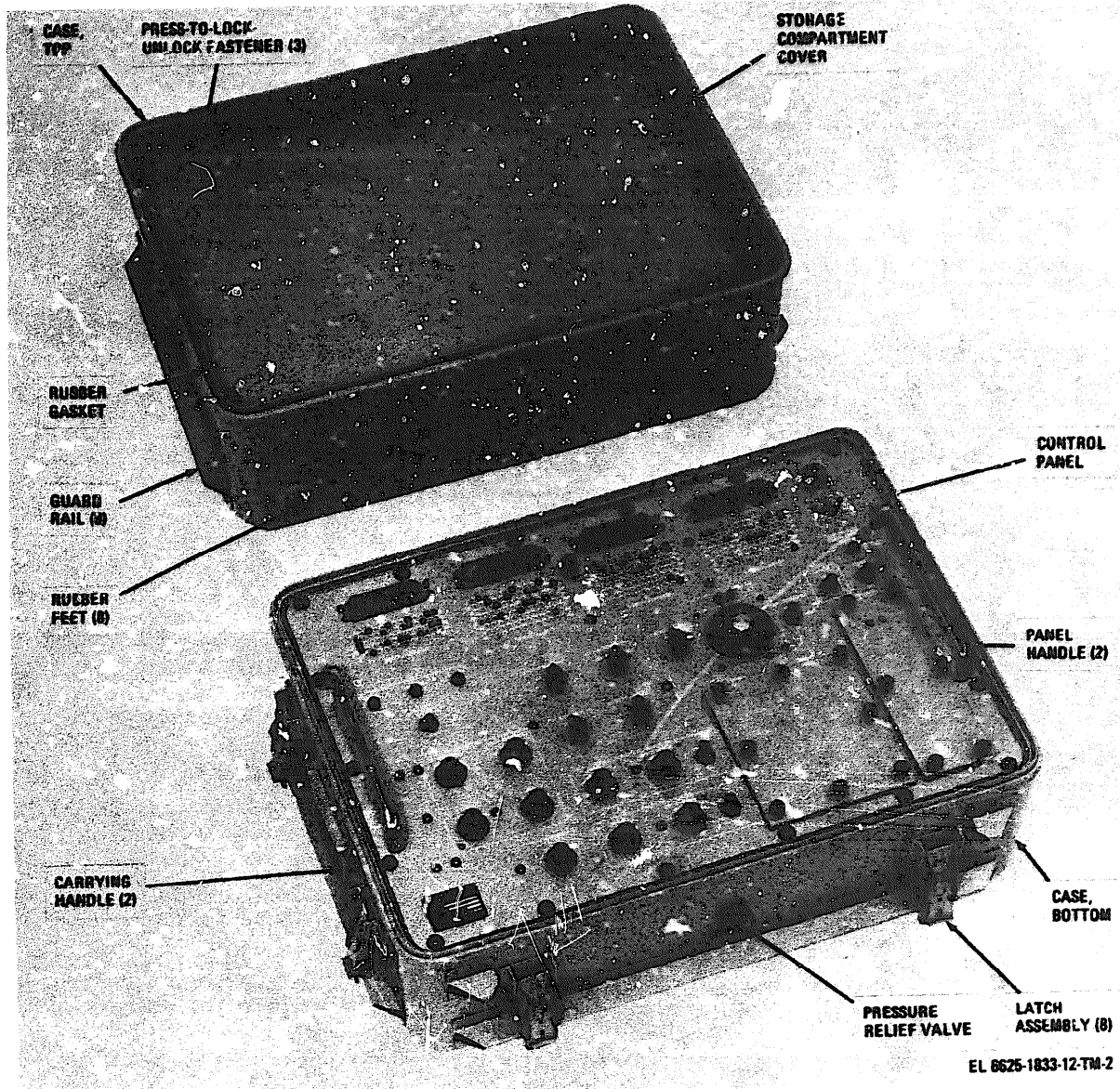
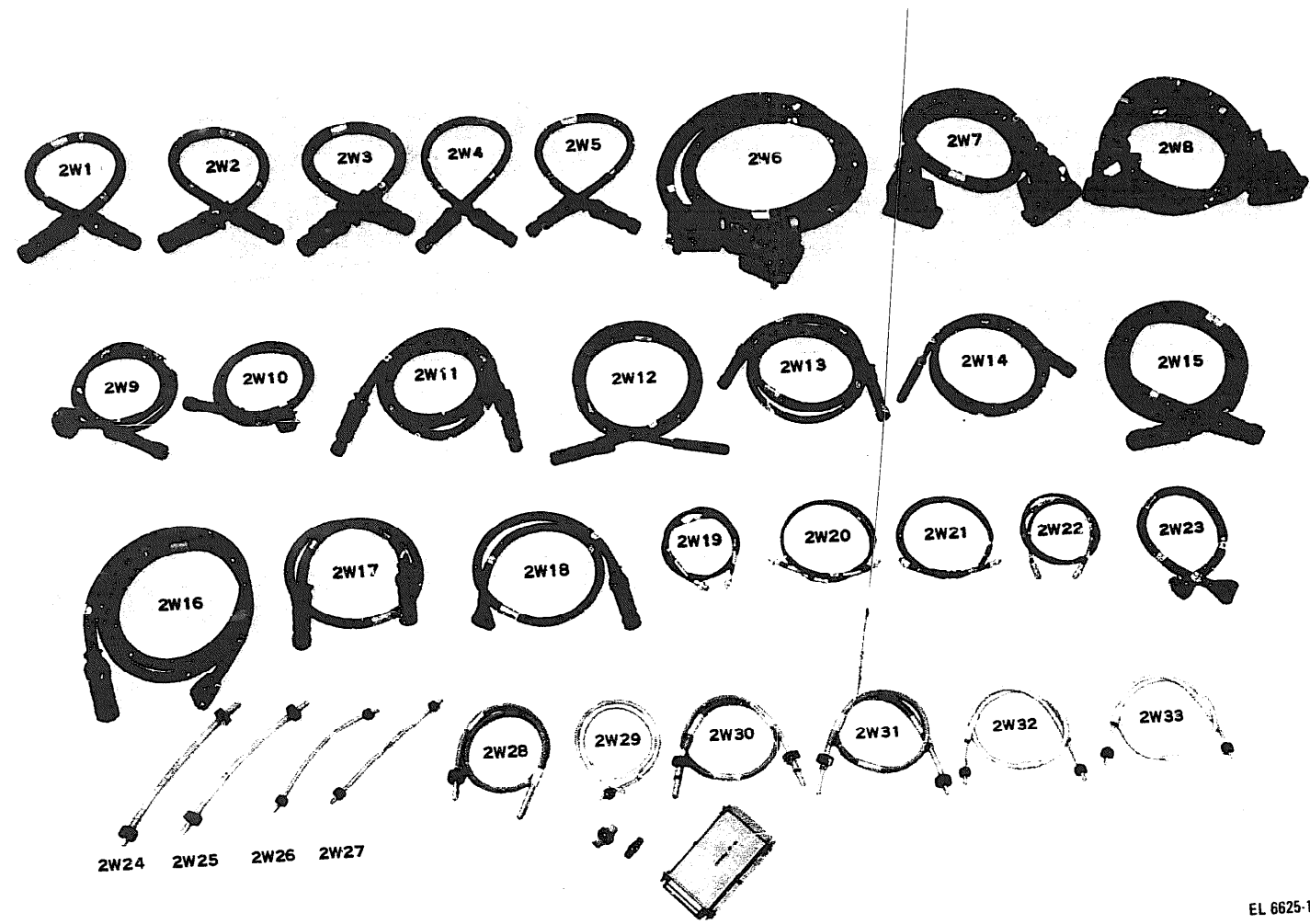
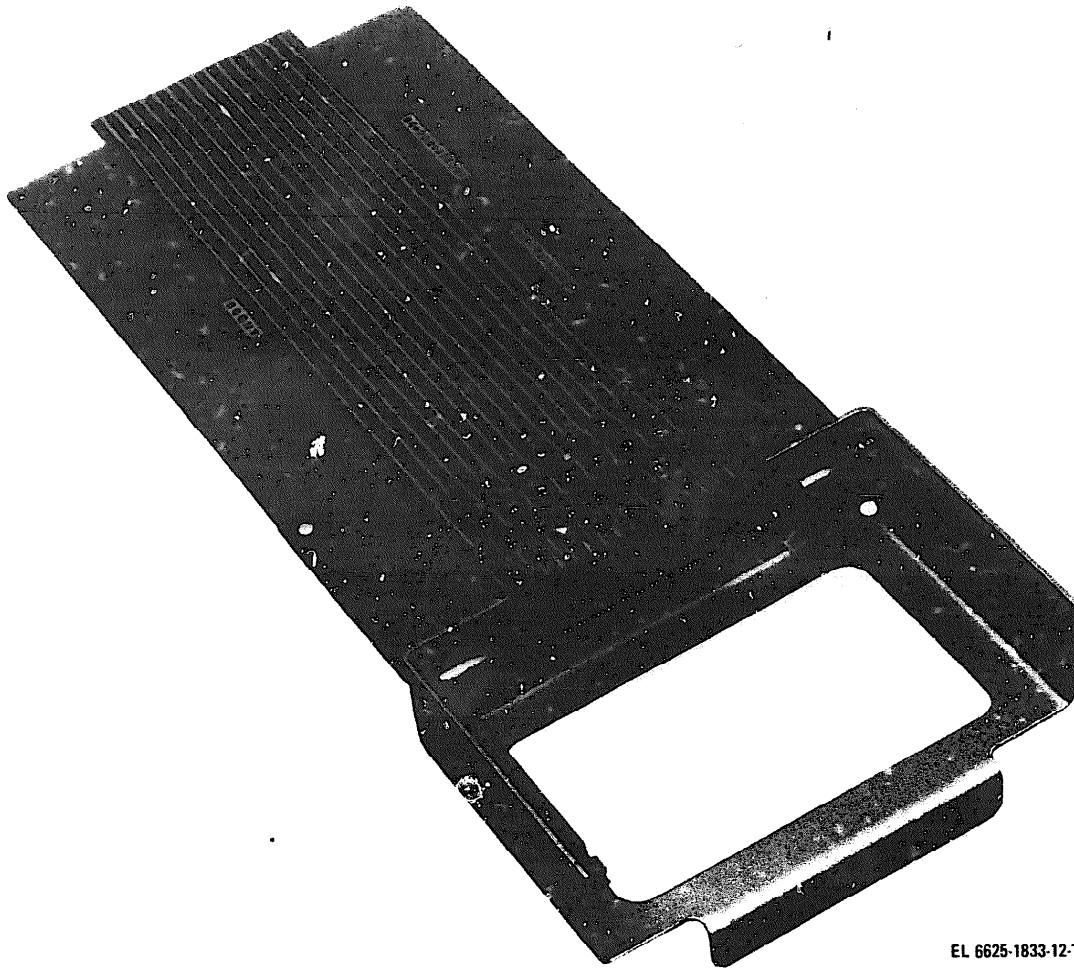


Figure 1-2. Test Set Subassembly MX-8639/APS-94D.



EL 6625-1833-12-TM-3

Figure 1-3. Test Set, Group, Indicator, Radar OS-63/APS-94D, Cables.



EL 6625-1833-12-TM-4

Figure 1-4. Typical test adapter.

SECTION II. PRESCRIBED LOAD ALLOWANCE

(1) FEDERAL STOCK NUMBER	(2) DESCRIPTION	USABLE ON CODE	(3) 15-DAY ORG. MAINT. ALLOWANCE			
			(a)	(b)	(c)	(d)
			1-5	6-20	21-50	51-100
5355-556-0145	KNOB: MS91528-1K2B; (96906)				1	1
5355-680-1357	KNOB: MS91528-1F2B; (96906)		1		2	3
6240-763-7744	LAMP, INCANDESCENT: MSL8209 387; (96906)				1	1
6625-193-8425	CABLE ASSEMBLY, POWER, ELECTRICAL: CX12343U1FT; (80058)				1	1
6625-403-1052	CABLE ASSEMBLY, SPECIAL PURPOSE, ELECTRICAL: CX12324U3FT; (80058)					1
6625-403-1053	CABLE ASSEMBLY, SPECIAL PURPOSE, ELECTRICAL: CX12296U3FT; (80058)					1
6625-412-2025	CABLE ASSEMBLY, SPECIAL PURPOSE, ELECTRICAL: CX12333U8FT; (80058)					1
6625-0412-2029	CABLE ASSEMBLY, SPECIAL PURPOSE, ELECTRICAL: CX12322U8FT; (80058)					1
6625-412-9242	CABLE ASSEMBLY, SPECIAL PURPOSE, ELECTRICAL: CX12332U3FT; (80058)					1
6625-477-9964	CABLE ASSEMBLY, SPECIAL PURPOSE, ELECTRICAL: CX12354U5FT; (80058)					1
6625-477-9965	CABLE ASSEMBLY, SPECIAL PURPOSE, ELECTRICAL: CX12335U8FT; (80058)					1
6625-481-3711	CABLE ASSEMBLY, POWER, ELECTRICAL: CX12348U3FT; (80058)			1		1
6625-489-2650	CABLE ASSEMBLY, SPECIAL PURPOSE, ELECTRICAL: CX12328U8FT; (80058)					1
6625-489-2651	CABLE ASSEMBLY, SPECIAL PURPOSE, ELECTRICAL: CX12327U8FT; (80058)					1
6625-489-2652	CABLE ASSEMBLY, SPECIAL PURPOSE, ELECTRICAL: CX12326U8FT; (80058)					1
6625-489-2653	CABLE ASSEMBLY, SPECIAL PURPOSE, ELECTRICAL: CX12329U8FT; (80058)					1
6625-489-2566	CABLE ASSEMBLY, SPECIAL PURPOSE, ELECTRICAL: CX12331U3FT; (80058)					1
6625-489-2658	CABLE ASSEMBLY, SPECIAL PURPOSE, ELECTRICAL: CX12325U8FT; (80058)					1
6625-489-2659	CABLE ASSEMBLY, SPECIAL PURPOSE, ELECTRICAL: CX12337U4FT; (80058)					1
6625-489-2660	CABLE ASSEMBLY, SPECIAL PURPOSE, ELECTRICAL: CX12323U3FT; (80058)					1
6625-489-2661	CABLE ASSEMBLY, SPECIAL PURPOSE, ELECTRICAL: CX12336U4FT; (80058)					1
6625-493-2994	CABLE ASSEMBLY, SPECIAL PURPOSE, ELECTRICAL: CX12346U10IN; (80058)			1		1
6625-493-2996	CABLE ASSEMBLY, POWER, ELECTRICAL: CX12344U3FT; (80058)					1
6625-493-3008	CABLE ASSEMBLY, POWER, ELECTRICAL: CX12347U3FT; (80058)					1
6625-493-3010	CABLE ASSEMBLY, SPECIAL PURPOSE, ELECTRICAL: CX12338U2FT; (80058)				1	1
6625-493-7477	CABLE ASSEMBLY, RADIO FREQUENCY: CG3618U4FT; (80058)				1	2
6625-493-7478	CABLE ASSEMBLY, POWER, ELECTRICAL: CX12241U6FT; (80058)					1
6625-494-6616	CABLE ASSEMBLY, POWER, ELECTRICAL: CX12240U6FT; (80058)					1
6625-936-0284	CABLE ASSEMBLY, POWER, ELECTRICAL: CX12345U3FT; (80058)					1

SECTION III. REPAIR PARTS FOR ORGANIZATIONAL MAINTENANCE

(1) SMR CODE	(2) FEDERAL STOCK NUMBER	(3) DESCRIPTION REFERENCE NUMBER & MFR. CODE	(4) UNIT OF MEAS	(5) QTY INC IN UNIT	(6) 15-DAY ORGANIZATIONAL MAINTENANCE ALLOWANCE				(7) ILLUSTRATIONS	
					(a) 1-5	(b) 6-20	(c) 21-50	(d) 51-100	(a) FIG NO.	(b) ITEM NO. OR REFERENCE DESIGNATION
G-O-R A001	6625-193-8428	TEST SET GROUP, INDICATOR, FADAR, OQ-63: OQ63A9S94D; (80058)	EA	1						
G-O-R A002	6625-938-0087	TEST SET SUBASSEMBLY: MX8638APS94D; (80058)	EA	1					1-1	1
P-O A575	5355-680-1357	KNOB: MS91528-1F2B; (96906)	EA	9	*	1	2	3		1A2MP492 THRU 1A2MP500
P-O A835	6240-763-7744	LAMP, INCANDESCENT: MS18209-387; (96906)	EA	2	*	*	1	1		1A1DS1, 1A1DS2
G-O-R B369	6625-938-0236	TEST SET SUBASSEMBLY: MX8639APS94D; (80058)	EA	1					1-2	2
G-O-R B370	6625-194-2856	ADAPTER, TEST: MX8630APS94D; (80058)	EA	1					1-4	2MP1
G-O-R B382	6625-938-0228	ADAPTER, TEST: MX8633APS94D; (80058)	EA	1					1-4	2MP8
G-O-R B396	6625-938-0227	ADAPTER, TEST: MX8634APS94D; (80058)	EA	1					1-4	2MP45
G-O-R B410	6625-762-4901	ADAPTER, TEST: MX8631APS94D; (80058)	EA	1					1-4	2MP82
G-O-R B423	6625-489-0427	ADAPTER, TEST: MX8632APS94D; (80058)	EA	1					1-4	2MP119
G-O-R B437	6625-762-4923	ADAPTER, TEST: MX8742APS94D; (80058)	EA	1					1-4	2MP162
G-O-R B447	6625-762-4923	ADAPTER, TEST: MX8794APS94D; (80058)	EA	1					1-4	2MP432
P-O B458	6625-493-2994	CABLE ASSEMBLY, SPECIAL PURPOSE, ELECTRICAL: CX12340U10IN; (80058)	EA	2	*	*	1	1	1-3	2W26, 2W27
P-O B459	6625-493-2996	CABLE ASSEMBLY, POWER, ELECTRICAL: CX12344U3FT; (80058)	EA	1	*	*	*	1	1-3	2W28
P-O B460	6625-493-3008	CABLE ASSEMBLY, POWER, ELECTRICAL: CX12347U3FT; (80058)	EA	1	*	*	*	1	1-3	2W29
P-O B461	6625-193-8426	CABLE ASSEMBLY, POWER, ELECTRICAL: CX12343U1FT; (80058)	EA	2	*	*	1	1	1-3	2W24, 2W25
P-O B462	6625-481-3711	CABLE ASSEMBLY, POWER, ELECTRICAL: CX12348U3FT; (80058)	EA	2	*	*	1	1	1-3	2W32, 2W33
F-O B463	6625-938-0284	CABLE ASSEMBLY, POWER, ELECTRICAL: CX12345U3FT; (80058)	EA	2	*	*	1	1	1-3	2W30, 2W31
F-O B464	6625-493-3010	CABLE ASSEMBLY, SPECIAL PURPOSE, ELECTRICAL: CX12338U2FT; (80058)	EA	1	*	*	*	1	1-3	2W23
P-O-R B476	6625-412-2029	CABLE ASSEMBLY, SPECIAL PURPOSE, ELECTRICAL: CX12322U8FT; (80058)	EA	1	*	*	*	1	1-3	2W13
P-O-R B480	6625-489-2660	CABLE ASSEMBLY, SPECIAL PURPOSE, ELECTRICAL: CX12323U3FT; (80058)	EA	1	*	*	*	1	1-3	2W3
P-O-R B484	6625-403-1052	CABLE ASSEMBLY, SPECIAL PURPOSE, ELECTRICAL: CX12324U3FT; (80058)	EA	1	*	*	*	1	1-3	2W5
P-O-R B488	6625-412-2023	CABLE ASSEMBLY, SPECIAL PURPOSE, ELECTRICAL: CX12333U8FT; (80058)	EA	1	*	*	*	1	1-3	2W6
P-O-R B493	6625-477-9964	CABLE ASSEMBLY, SPECIAL PURPOSE, ELECTRICAL: CX12334U5FT; (80058)	EA	1	*	*	*	1	1-3	2W7
P-O-R B498	6625-477-9965	CABLE ASSEMBLY, SPECIAL PURPOSE, ELECTRICAL: CX12335U8FT; (80058)	EA	1	*	*	*	1	1-3	2W8

SECTION III REPAIR PARTS FOR ORGANIZATIONAL MAINTENANCE (CONTINUED)

(1) SMR CODE	(2) FEDERAL STOCK NUMBER	(3) DESCRIPTION REFERENCE NUMBER & MFR. CODE	(4) UNIT OF MEAS	(5) QTY INC IN UNIT	(6) 15-DAY ORGANIZATIONAL MAINTENANCE ALM				(7) ILLUSTRATIONS	
					(a) 1-5	(b) 6-20	(c) 21-50	(d) 51-100	(a) FIG NO.	(b) ITEM NO. OR REFERENCE DESIGNATION
6625-489-2658		CABLE ASSEMBLY, SPECIAL PURPOSE, ELECTRICAL: CXK2325U8FT; (80058)	EA	1	*	*	*	1	1-3	2W11
6625-489-2652		CABLE ASSEMBLY, SPECIAL PURPOSE, ELECTRICAL: CXK2326U8FT; (80058)	EA	1	*	*	*	1	1-3	2W12
6625-489-26451		CABLE ASSEMBLY, SPECIAL PURPOSE, ELECTRICAL: CXK2327U8FT; (80058)	EA	1	*	*	*	1	1-3	2W14
6625-489-2650		CABLE ASSEMBLY, SPECIAL PURPOSE, ELECTRICAL: CXK2328U8FT; (80058)	EA	1	*	*	*	1	1-3	2W15
6625-489-2653		CABLE ASSEMBLY, SPECIAL PURPOSE, ELECTRICAL: CXK2329U8FT; (80058)	EA	1	*	*	*	1	1-3	2W16
6625-489-2661		CABLE ASSEMBLY, SPECIAL PURPOSE, ELECTRICAL: CXK2336U4FT; (80058)	EA	1	*	*	*	1	1-3	2W17
6625-489-2659		CABLE ASSEMBLY, SPECIAL PURPOSE, ELECTRICAL: CXK2337U4FT; (80058)	EA	1	*	*	*	1	1-3	2W18
6625-403-1053		CABLE ASSEMBLY, SPECIAL PURPOSE, ELECTRICAL: CXK2296U3FT; (80058)	EA	1	*	*	*	1	1-3	2W1
6625-489-2655		CABLE ASSEMBLY, SPECIAL PURPOSE, ELECTRICAL: CXK2331U3FT; (80058)	EA	2	*	*	*	1	1-3	2W2
6625-412-9942		CABLE ASSEMBLY, SPECIAL PURPOSE, ELECTRICAL: CXK2332U3FT; (80058)	EA	1	*	*	*	1	1-3	2W4
6625-494-6616		CABLE ASSEMBLY, POWER, ELECTRICAL: CXK2240U6FT; (80058)	EA	1	*	*	*	1	1-3	2W9
6625-493-7478		CABLE ASSEMBLY, POWER, ELECTRICAL: CXK2241U6FT; (80058)	EA	1	*	*	*	1	1-3	2W10
6625-493-7477		CABLE ASSEMBLY, RADIO FREQUENCY: CG3618U4FT; (80058)	EA	4	*	*	1	2	1-3	2W19 THRU 2W22
5355-680-1357		KNOB: SAME AS A575	EA	9	REF	REF	REF	REF		2MP306 THRU 2MP314
5355-556-0145		KNOB: MS91528-1K2B; (96906)	EA	5	*	*	1	1		2MP315 THRU 2MP319
6240-763-7744		LAMP, INCANDESCENT: SAME AS A835	EA	4	REF	REF	REF	REF		2DS1 THRU 2DS4

SECTION V INDEX-FEDERAL STOCK NUMBER & REFERENCE NUMBER CROSS-REFERENCE

T O I T E M A N D F I G U R E N U M B E R

FEDERAL STOCK NUMBER	ITEM SEQUENCE NUMBER	FEDERAL STOCK NUMBER	ITEM SEQUENCE NUMBER	FEDERAL STOCK NUMBER	ITEM SEQUENCE NUMBER
5355-556-0145	C203	6240-763-7744	A835		
5355-680-1357	A575	6240-763-7744	C204		
5355-6 J-1357	C202				
6625-193-8426	B461	REF. NO.	MFG. CO.	ITEM SEQ. NO.	REF. NO.
6625-193-8428	A001	CG3618U4FT	80058	B552	MX8634APS94D
6625-194-2856	B370	CX12240U6FT	80058	B543	80058
6625-403-1052	B484	CX12241U6FT	80058	B547	MX8633APS94D
6625-403-1053	B531	CX12296U3FT	80058	B531	80058
6625-412-2025	B488	CX12322U8FT	80058	B476	MX8742APS94D
6625-412-2029	B476	CX12323U3FT	80058	B480	80058
6625-412-9242	B539	CX12324U3FT	80058	B484	MX8794APS94D
6625-477-9964	B493	CX12325U8FT	80058	B503	80058
6625-477-9965	B498	CX12326U8FT	80056	B507	Q63APS94D
6625-481-3711	B462	CX12327U8FT	80058	B511	
6625-489-0427	B423	CX12328U8FT	80058	B515	
6625-489-2650	B515	CX12329U8FT	80058	B519	
6625-489-2651	B511	CX12331U3FT	80058	B535	
6625-489-2652	B507	CX12332U3FT	80058	B539	
6625-489-2653	B519	CX12333U8FT	80058	B488	
6625-489-2655	B535	CX12334U5FT	80058	B493	
6625-489-2658	B563	CX12335U8FT	80058	B498	
6625-489-2659	B527	CX12336U4FT	80058	B523	
6625-489-2660	B480	CX12337U4FT	80058	B527	
6625-489-2661	B523	CS12338U2FT	80058	B464	
6625-493-2994	B458	CX12343U1FT	80058	B461	
6625-493-2996	B459	CX12344U3FT	80058	B459	
6625-493-3008	B460	CX12345UFT	80058	B463	
6625-493-3010	B464	CS12346U101N	80058	B458	
6625-493-7477	B552	CX12347U3FT	80058	B460	
6625-493-7478	B547	CX12348UFT	80058	B462	
6625-494-6616	B543	MS18209-387	96906	A835	
6625-762-4901	B410	MS18209-387	96906	C204	
6625-762-4923	B437	MS91528-1P2B	96906	A575	
6625-938-0087	A002	MS91528-1K2B	96906	C202	
6625-938-0227	B396	MS91528-1K2B	96906	C203	
6625-938-0228	B382	MX8630APS94D	80058	B370	
6625-938-0236	B369	MX8631APS94D	80058	B410	
6625-938-0284	B463	MX8632APS94D	80058	B423	
		MX8633APS94D	80058	B382	

SECTION VI. INDEX REFERENCE DESIGNATION
CROSS-REFERENCE TO ITEM SEQUENCE NUMBER

REFERENCE DESIGNATION	ITEM SEQUENCE NUMBER	REFERENCE DESIGNATION	ITEM SEQUENCE NUMBER	REFERENCE DESIGNATION	ITEM SEQUENCE NUMBER
1	A002	2W10	B547		
1A1DS1	A835	2W11	B503		
1A1DS2	A835	2W12	B507		
1A2MP492	A575	2W13	B476		
1A2MP493	A575	2W14	B511		
1A2MP494	A575	2W15	B515		
1A2MP495	A575	2W16	B519		
1A2MP496	A575	2W17	B523		
1A2MP497	A575	2W18	B527		
1A2MP498	A575	2W19	B552		
1A2MP499	A575	2W20	B552		
2	B369	2W21	B552		
2DS1	C204	2W22	B462		
2DS2	C204	2W23	B464		
2DS3	C204	2W24	B461		
2DS4	C204	2W25	B461		
2MP1	B370	2W26	B458		
2MP119	B423	2W27	B458		
2MP162	B437	2W28	B459		
2MP306	C202	2W29	B460		
2MP307	C202	2W30	B463		
2MP308	C202	2W31	B463		
2MP309	C202	2W32	B462		
2MP310	C202	2W33	B462		
2MP311	C202	2W2	B535		
2MP312	C202	2W3	B480		
2MP313	C202	2W4	B539		
2MP314	C202	2W5	B484		
2MP315	C203	2W6	B488		
2MP316	C203	2W7	B493		
2MP317	C203	2W8	B498		
2MP318	C203	2W9	B543		
2MP319	C203				
2MP432	B447				
2MP45	B396				
2MP8	B382				
2MP82	B410				
2W1	B531				

By Order of the **Secretary of the Army.**

W. C. WESTMORELAND,
General, United States Army,
Chief of Staff.

Official:

VERNE L. BOWERS,
Major General, United States Army,
The Adjutant General.

Distribution:

To be distributed in accordance with DA Form 12-36, organizational maintenance requirements for the OV-1B and OV-1C aircraft.

END

12-25-82

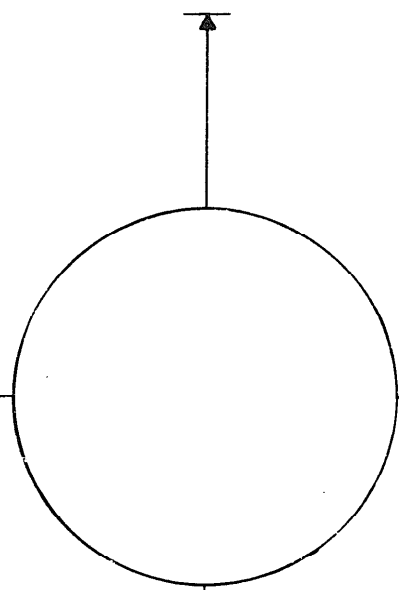
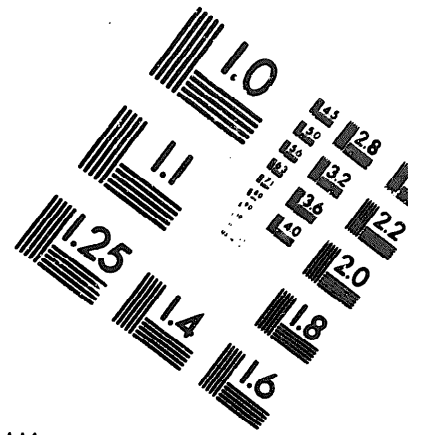
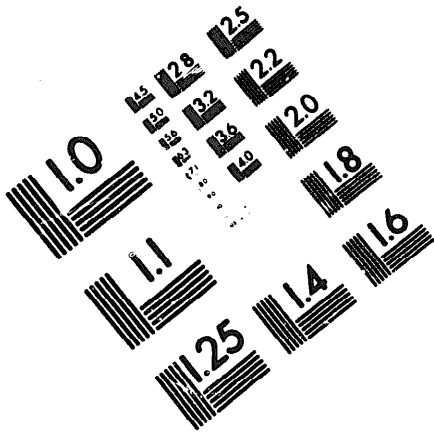
DATE





DEPARTMENT OF THE ARMY

MICROFORM
TEST TARGET



150 MM

1.0 mm (e= .81 mm)

ABCDEFGHIJKLMN^oQRSTUVWXYZ1234567890
abcdefghijklmnopqrstuvwxyz\$%&/'%# 1/2 1/4 3/4 —=+ x&@*

1.5 mm (e= 1.09 mm)

ABCDEFGHIJKLMN^oQRSTUVWXYZ1234567890
abcdefghijklmnopqrstuvwxyz\$%&/'%# 1/2 1/4 3/4 —=+ x&@*

2.0 mm (e= 1.37 mm)

ABCDEFGHIJKLMN^oQRSTUVWXYZ
abcdefghijklmnopqrstuvwxyz
1234567890\$%&/'%# 1/2 1/4 3/4 —=+ x&@*

2.5 mm (e= 1.77 mm)

ABCDEFGHIJKLMN^oQRSTUVWXYZ
abcdefghijklmnopqrstuvwxyz
1234567890\$%&/'%# 1/2 1/4 3/4 —=+ x&@*

1.0 mm (e= .81 mm)

ABCDEFGHIJKLMN^oQRSTUVWXYZ1234567890
abcdefghijklmnopqrstuvwxyz\$%&/'%# 1/2 1/4 3/4 —=+ x&@*

1.5 mm (e= 1.09 mm)

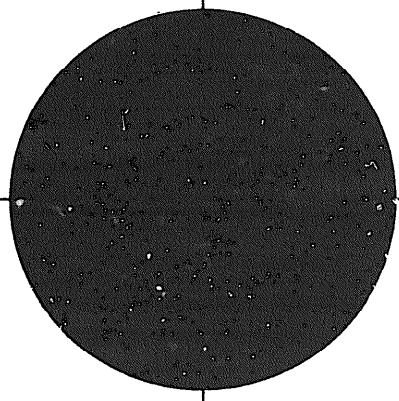
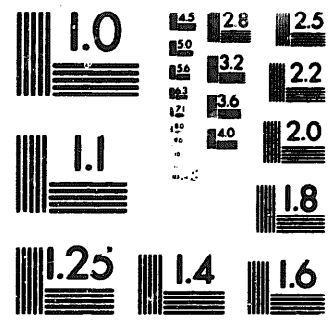
ABCDEFGHIJKLMN^oQRSTUVWXYZ1234567890
abcdefghijklmnopqrstuvwxyz\$%&/'%# 1/2 1/4 3/4 —=+ x&@*

2.0 mm (e= 1.37 mm)

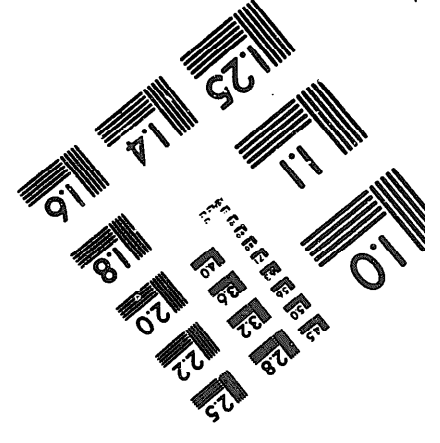
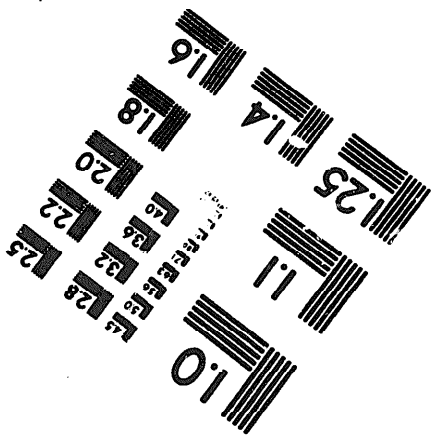
ABCDEFGHIJKLMN^oQRSTUVWXYZ
abcdefghijklmnopqrstuvwxyz
1234567890\$%&/'%# 1/2 1/4 3/4 —=+ x&@*

2.5 mm (e= 1.77 mm)

ABCDEFGHIJKLMN^oQRSTUVWXYZ
abcdefghijklmnopqrstuvwxyz
1234567890\$%&/'%# 1/2 1/4 3/4 —=+ x&@*



200 MM



250 MM